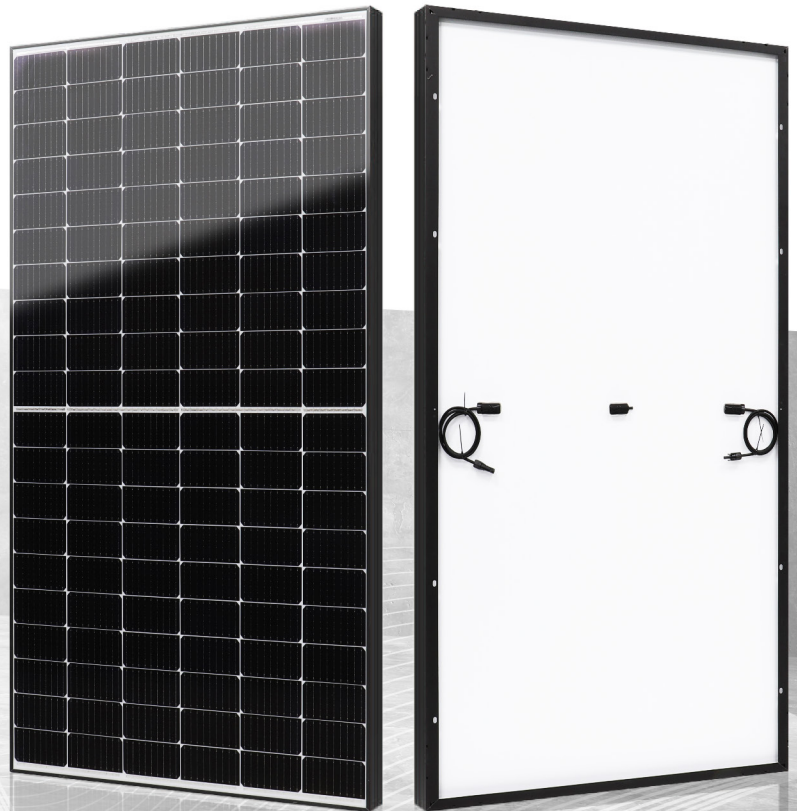




390-405w






SMALL CHANGES.
BIG ACCOMPLISHMENTS



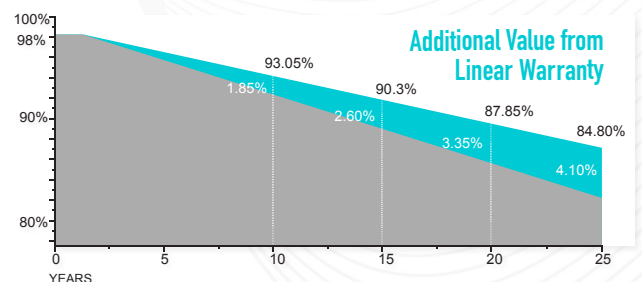
TWIN POWER II SERIES

Powerwave redefined the high-efficiency module series by integrating 182mm silicon wafers with multi-busbar and half-cut cell technologies. Powerwave panel combined creative technology effectively and extremely improved the module efficiency and power output.

KEY FEATURES

-  **LESS MISMATCH TO GET MORE POWER**
-  **LESS POWER LOSS BY MINIMIZING THE SHADING IMPACT**
-  **COMPETITIVE LOW LIGHT PERFORMANCE**
-  **3 TIMES EL TEST TO ENSURE BEST QUALITY**
-  **IDEAL CHOICE FOR UTILITY AND COMMERCIAL SCALE PROJECTS BY REDUCED BOS AND IMPROVE ROI**

WARRANTY

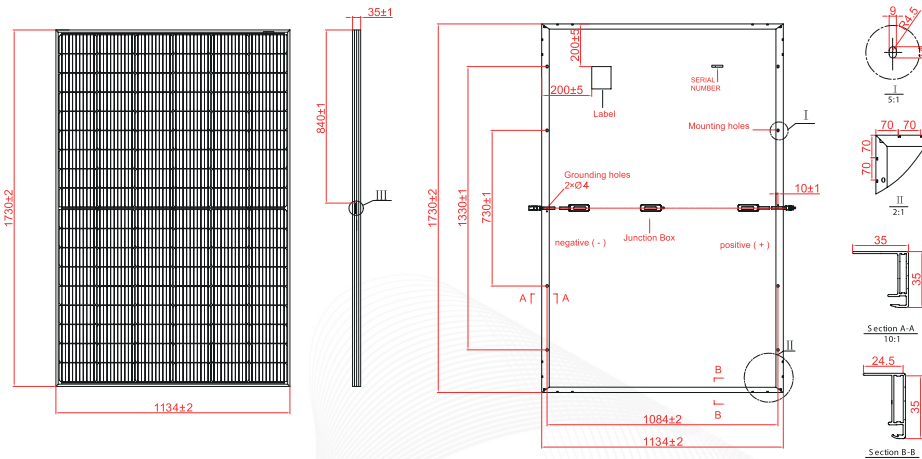


15 YEARS GUARANTEE ON PRODUCT MATERIAL & WORKMANSHIP

25 YEARS LINEAR POWER OUTPUT WARRANTY

MECHANICAL SPECIFICATIONS

External Dimensions	1730 x 1134x 35 mm
Weight	21.8 kg
Solar Cells	PERC Mono (108 pcs)
Front Glass	3.2 mm AR coating tempered glass, low iron
Frame	Anodized aluminum alloy
Junction Box	IP68,3 diodes
Output Cables	4.0 mm ² , 250mm(+)/350mm(-) or Customized Length
Connector	Genuine MC4
Mechanical Load	Front side 5400Pa / Rear side 2400Pa



ELECTRICAL CHARACTERISTICS

Module Type	PW-390-BMD-HV	PW-395-BMD-HV	PW-400-BMD-HV	PW-405-BMD-HV
	STC	STC	STC	STC
Maximum Power at STC (Pmp)	390	395	400	405
Open Circuit Voltage (Voc)	36.90	37.01	37.12	37.22
Short Circuit Current (Isc)	13.40	13.50	13.60	13.70
Maximum Power Voltage (Vmp)	30.59	30.69	30.81	30.93
Maximum Power Current (Imp)	12.78	12.88	12.99	13.10
Module Efficiency at STC(ηm)	19.88	20.13	20.39	20.64
Power Tolerance	(0,+3%)			
Maximum System Voltage	1500V DC			
Maximum Series Fuse Rating	25 A			

STC: Irradiance 1000 W/m² module temperature 25°C AM=1.5
 Power measurement tolerance: +/-3%

TEMPERATURE CHARACTERISTICS

Pmax Temperature Coefficient	-0.35 %/°C
Voc Temperature Coefficient	-0.27 %/°C
Isc Temperature Coefficient	+0.05 %/°C
Operating Temperature	-40 ~ +85 °C
Nominal Operating Cell Temperature (NOCT)	45 ± 2 °C



390-405w