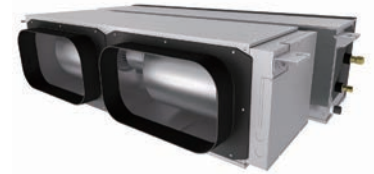


Product Specifications



PEA-M HAA Series (Ceiling Concealed)											
Indoor Unit		PEA-M100HAA			PEA-M125HAA			PEA-M140HAA			
Outdoor Unit		PUZ-M 100VKA-A	PUZ-ZM 100VKA-A	PUZ-ZM 100YKA2-A	PUZ-M 125VKA-A	PUZ-ZM 125VKA-A	PUZ-ZM 125YKA-A	PUZ-M 140VKA-A	PUZ-ZM 140VKA-A	PUZ-ZM 140YKA-A	
Refrigerant		R32									
Power Supply	Source	Outdoor power supply									
	Outdoor	V:230V, Single-phase, 50Hz Y:400V, Three-phase, 50Hz									
	Indoor	-									
Cooling	Capacity [Min-Rated-Max]	kW	4.00 - 10.00 - 10.60	4.90 - 10.00 - 11.40	6.00 - 12.00 - 13.50	5.50 - 12.50 - 14.00	6.20 - 14.00 - 15.30	6.20 - 14.00 - 15.30			
	Total Input [Rated]	kW	3.02	2.65	3.11	3.78	3.50	3.50	4.24	4.19	4.19
	AEER/EER		3.21/3.31	3.63/3.77	3.57/3.77	3.10/3.17	3.47/3.57	3.42/3.57	3.23/3.30	3.26/3.34	3.22/3.34
	AEER [Part-load %] ^{*1}		-	-	4.33	4.25	-	-	-	-	-
	Running Current [Rated] ^{*4}	A	13.80	12.20	5.20	17.40	15.40	5.90	19.50	18.30	6.80
	Sound Pressure Level	In (Lo-Mid2-Mid1-Hi) (SPL) ^{*3}	dB(A)	29 - 32 - 36 - 38			35 - 38 - 42 - 45				
		Out (PWL)		52 (71)	49 (69)	50 (70)	54 (72)	50 (70)	50 (70)	53 (71)	50 (70)
Air Volume (In) Lo-Mid2-Mid1-Hi	L/S ^{*3}	500 - 567 - 633 - 700			700 - 800 - 900 - 1000						
Heating	Capacity [Min-Rated-Max]	kW	2.80 - 12.50 - 12.50	4.50 - 11.20 - 14.00	4.10 - 14.00 - 15.50	5.00 - 14.00 - 16.00	5.70 - 16.00 - 18.00	5.70 - 16.00 - 18.00			
	Total Input [Rated]	kW	3.24	2.71	3.12	3.44	3.40	3.40	3.85	3.97	3.97
	ACOP/COP		3.75/3.85	3.98/4.13	3.91/4.13	3.69/4.06	3.99/4.11	3.94/4.11	4.06/4.15	3.92/4.03	3.88/4.03
	ACOP [Part-load %] ^{*1}		-								
	Running current [Rated] ^{*5}	A	14.80	12.70	5.20	16.00	15.00	5.60	17.70	17.70	6.30
	Sound Pressure Level	In (Lo-Mid2-Mid1-Hi) (SPL) ^{*3}	dB(A)	29 - 32 - 36 - 38			35 - 38 - 42 - 45				
		Out (PWL)		54 (72)	51 (69)	52 (70)	56 (74)	52 (70)	52 (70)	54 (72)	52 (71)
Air Volume (In) Lo-Mid2-Mid1-Hi	L/S ^{*3}	500 - 567 - 633 - 700			700 - 800 - 900 - 1000						
Max. Running Current	A	23.40	29.88	13.88	30.20	31.20	15.20	30.20	32.20	15.20	
Indoor Unit	Input [Rated]	kW ^{*3}	0.187/0.187			0.477/0.477					
	Dimensions [HxWxD]	mm	380 x 1405 x 900								
	Weight	kg	63.0			66.0					
	Static Pressure	Pa	50/100/150								
Outdoor Unit	Dimensions [HxWxD]	mm	981 x 1050 x 330 (+40)	1338 x 1050 x 330 (+40)	981 x 1050 x 330 (+40)	1338 x 1050 x 330 (+40)					
	Weight	kg	76.0	113.0	114.0	84.0	113.0	114.0	99.0	113.0	114.0
	Breaker Size	A	32		16	32	32	16	40	40	16
Ext. Piping	Diameter [Liquid/Gas]	mm	ø9.52/ø15.88								
	Max. Length/Height	m	55/30	75/30	55/30	75/30	55/30	75/30			
Guaranteed Operating Range [Outdoor]	Cooling ^{*2}	°C	-15 ~ 46	-5 (-15) ~ 52	-15 ~ 46	-5 (-15) ~ 52	-15 ~ 46	-5 (-15) ~ 52			
	Heating	°C	-15 ~ 21	-20 ~ 21	-15 ~ 21	-20 ~ 21	-15 ~ 21	-20 ~ 21			
Supply Air Duct	mm	1325 x 266									
Return Air Duct	mm	2 x 400 (2 x 16")									
Pre-Charge Refrigerant	kg	3.10 (30m)	4.00 (30m)	3.60 (30m)	4.00 (30m)	4.00 (30m)	4.00 (55m)	4.00 (30m)			
Additional Refrigerant	g/m	200	60	200	60	-	60				

*1 MEPS compliant at part load.

*2 With the optional air protection guide, cooling operation at -15°C outdoor temperature is possible.

*3 In case of NOT using air intake flange. With flange, please check P-Q curve on the indoor unit manual.

Rating Conditions:

*4 Cooling: Indoor 27°C, D.B./19°C, W.B. Outdoor 35°C, D.B./24°C, W.B.

*5 Heating: Indoor 20°C, D.B./15°C, W.B. Outdoor 7°C, D.B./6°C, W.B.